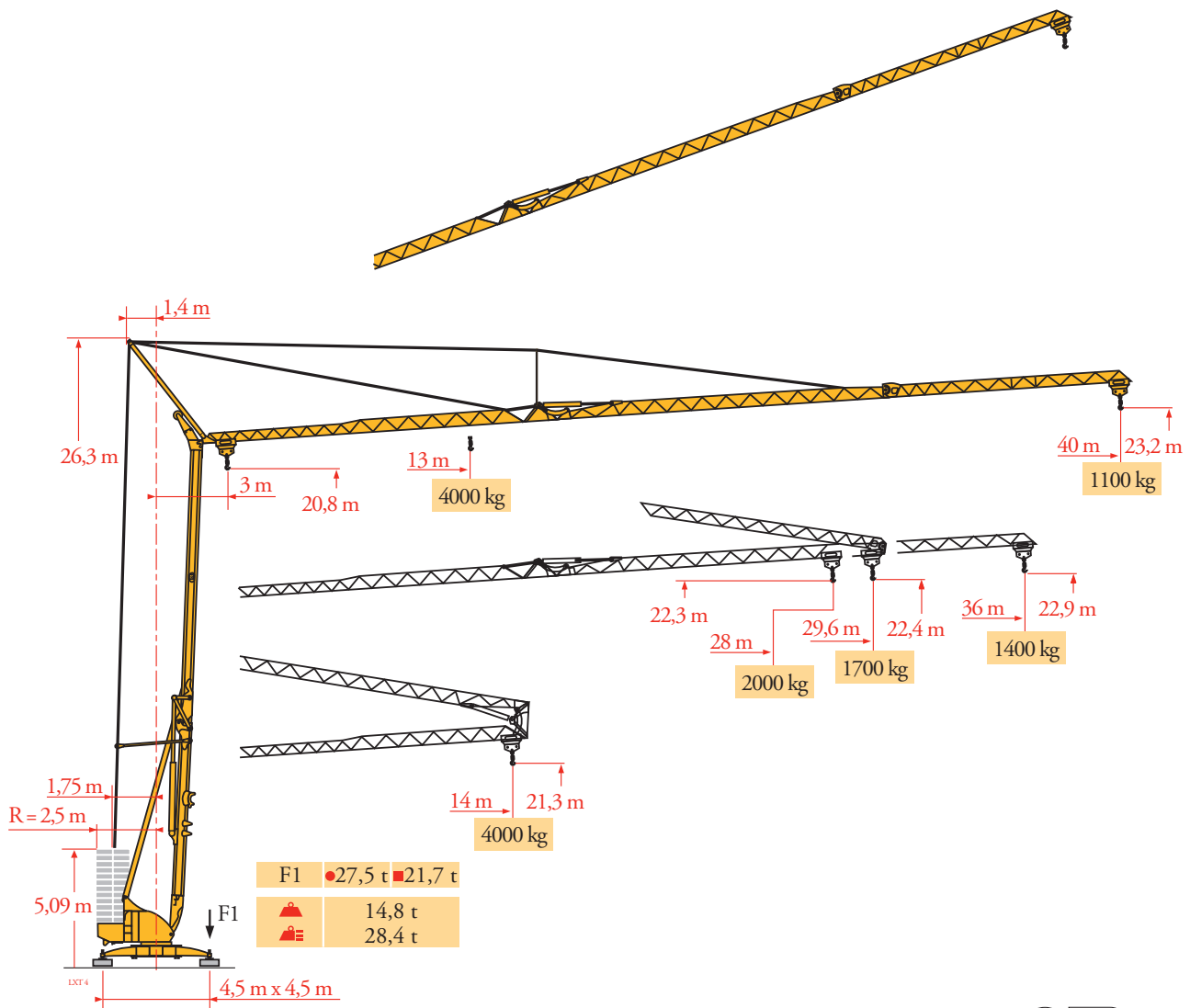
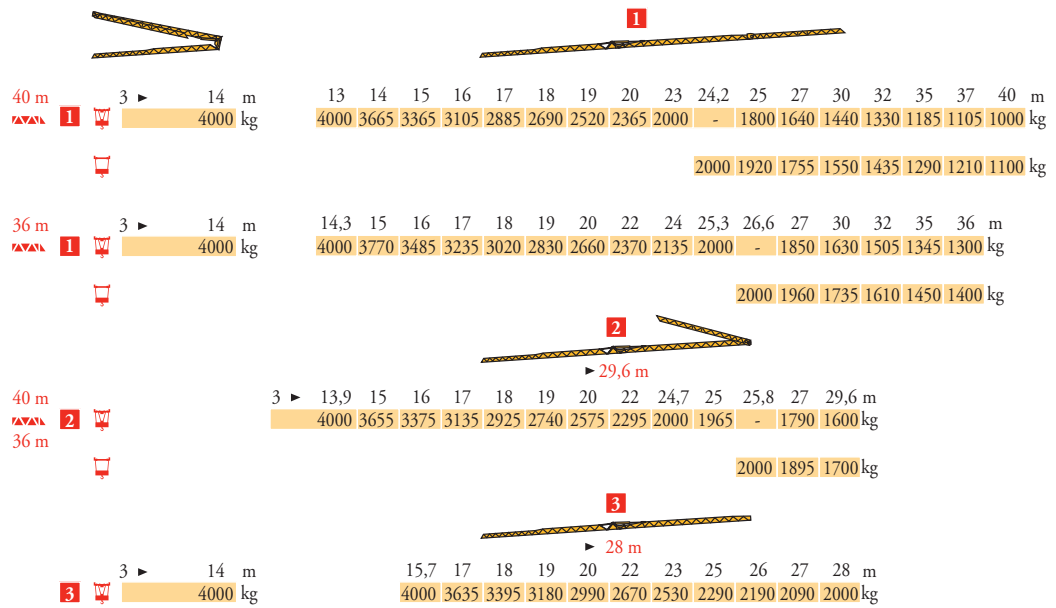


# Potain Igo 50



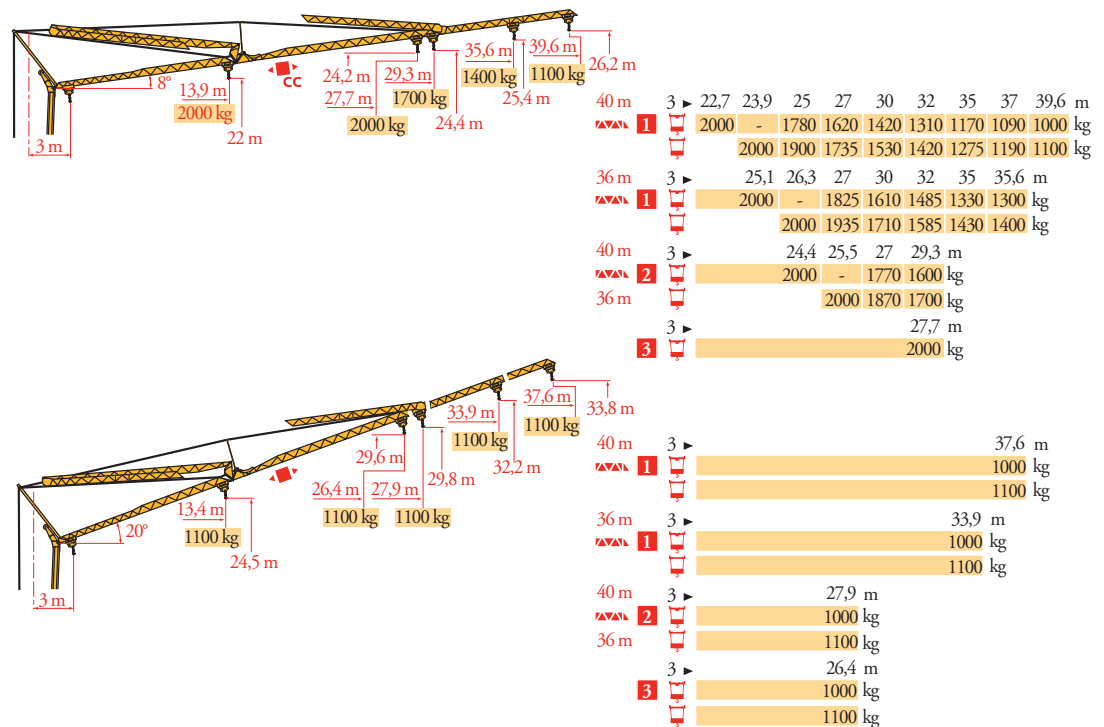
Courbes de charges  
Lastkurven  
Load diagrams  
Curvas de cargas  
Curve di carico  
Curva de cargas  
Диаграммы грузоподъемностей

LXT4



Flèche relevée  
Ausleger in Steilstellung  
Luffing jib  
Flecha izada  
Braccio impennato  
Lança inclinada  
Маховая стрела

LXT5



**FR**  
Chariot distributeur  
Chariot distributeur et courbes de charges  
Réactions en service  
Réactions hors service



**DE**  
Avide sans lest (ni train de transport) avec flèche et hauteur maximum



**EN**  
Poids total du lest



**DE**  
Verfahrbare Laufkatze  
Verfahrbare Laufkatze und Lastkurven  
Reaktionskräfte in Betrieb  
Reaktionskräfte außer Betrieb



**EN**  
Without load, ballast (und transport axes), with maximum jib and maximum height



**ES**  
Ballast-Gesamtgewicht.



**EN**  
Traversing trolley  
Traversing trolley and load diagrams  
Reactions in service  
Reactions out of service



**ES**  
Gross ballast weight.



**ES**  
Carro distribuidor  
Carro distribuidor y curvas de cargas  
Reacciones en servicio  
Reacciones fuera de servicio



**IT**  
Sin carga, sin lastre, (ni tren de transporte), flecha y altura máxima



**PT**  
Peso total del lastre.



**IT**  
Carrellino distributore  
Carrellino distributore e curve di carico  
Reazioni in servizio  
Reazioni fuori servizio



**PT**  
Peso totale della zavorra.



**PT**  
Carro distribuidor  
Carro distribuidor e curva de cargas  
Reações em serviço  
Reações fora de serviço



**RU**  
Sem carga (nem trem de transporte)- sem lastro com lança e altura máximas



**RU**  
общий вес груза










**RU**  
Грузовая тележка  
Грузовая тележка и диаграммы грузоподъемностей  
Реакции при работе  
Реакции в покое



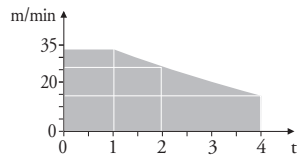
**RU**  
Вес без груза, балласта (или транспортных осей), с максимальной длиной стрелы и максимальной высотой

Mécanismes  
Antriebe  
Mechanisms  
Meccanismi  
Mecanismos  
Механизмы

LXT5

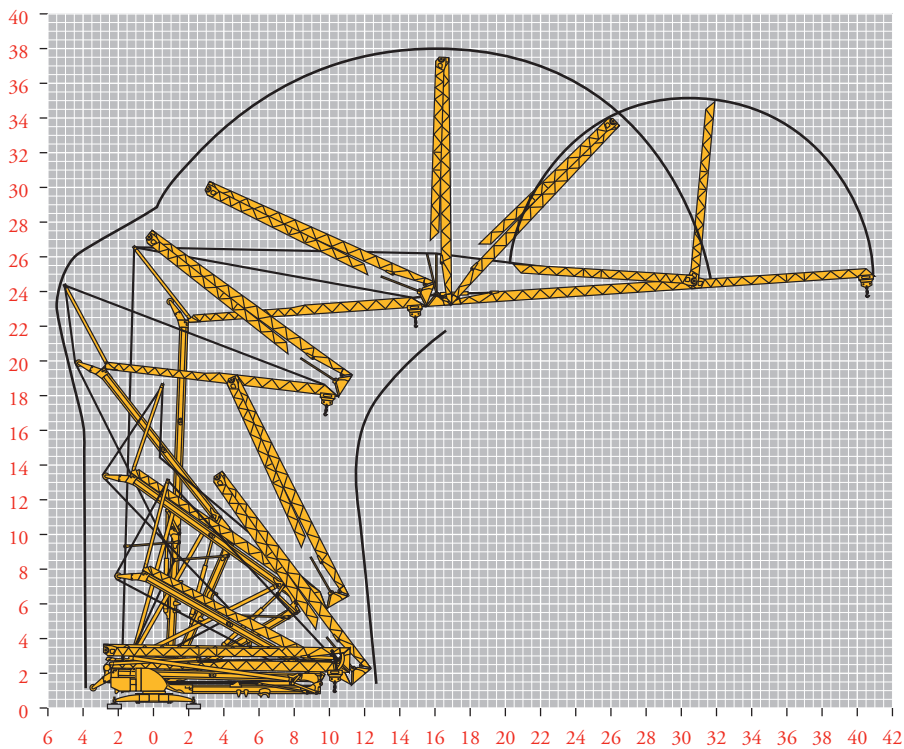
												ch - PS hp	kW	
	<b>15 LVF 10 Optima</b>	m/min	3,6	18	30	49	66						15	11
		kg	2000	2000	2000	1100	500							
		m/min	3,6	18	30	54	66	1,8	8,9	15	27	33		
		kg	2000	2000	2000	1000	500	4000	4000	4000	2000	1000		
	<b>3 DVF5</b>	m/min	19 - 45 (0 → 1000 kg) - 19 - 41 (1000 → 4000 kg)										3	2,2
	<b>RVF+ 51</b>	tr/min U/min rpm	0 → 0,8										5,5	4
 <b>IEC 60204-32</b>						 <b>kVA</b>								
400 V(+10% -10%) 50 Hz 480 V(+ 6% -10%) 60 Hz						15 LVF 10 : 23 kVA								




15 LVF 10  
Optima



Montage  
Montage  
Erection  
Montaje  
Montaggio  
Montagem  
Монтаж

LXT3




**FR**  
 Leverage  

 Distribution  

 Orientation

**DE**  
 Heben  
 Kätzfahren  
 Schwenken

**EN**  
 Hoisting  
 Trolleying  
 Slewing

**ES**  
 Elevación  
 Distribución  
 Orientación

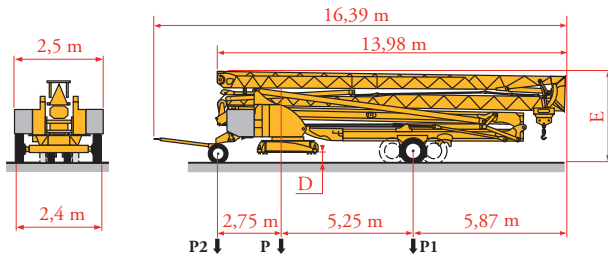
**IT**  
 Sollevamento  
 Distribuzione  
 Rotazione

**PT**  
 Elevação  
 Distribuição  
 Rotação

**RU**  
 Подъем  
 Перемещение каретки  
 Поворот

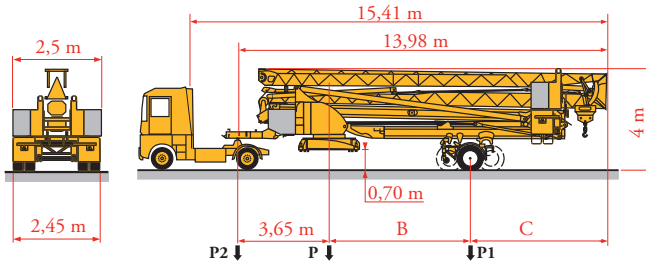
Transport  
Transport  
Transport  
Transporte  
Trasporto  
Transporte  
Транспортировка

LXT7



	Km/h	D (m)	E (m)	P (kg)	P1 (kg)	P2 (kg)
DJ100/S120	10	0,20/0,35	3,42/3,57	21655	11725	9930
DJ105/S125	25	0,20/0,35	3,42/3,57	21945	11945	10000

... \*\*



	Km/h	B (m)	C (m)	P (kg)	P1 (kg)	P2 (kg)
SL121/J135	25	5,88	5,24	22495	13000	9495
SL122/J215M	80	4,93	6,19	23650	15400	8250

... \*\*



**FR**

Transport grue  
toute lestée.

\*\*

Voir documentations  
techniques.

**DE**

Krantransport mit voller  
Ballastierung.

Siehe technische  
Dokumentation.

**EN**

Transport of crane with  
full ballast.

See technical  
documentations.

**ES**

Transporte grúa  
completamente lastrada.

Consulte la  
documentación técnica.

**IT**

Trasporto con gru  
completamente  
zavorrata.

Vedere la documen-  
tazione tecnica.

**PT**

Transporte de grua  
totalmente balastrada.

Consultar documen-  
tações técnicas.

**RU**

Перевозка крана с  
полным балластом

см. техническую  
документацию



Document commercial  
non contractuel. Pour  
toute information  
technique se référer à la  
notice correspondante.

Unverbindliches  
Vertriebsdokument. Für  
technische Informationen,  
siehe die entsprechenden  
Anweisungen.

This commercial document  
is not legally binding. For  
any technical information,  
please refer to the  
corresponding instructions.

Documento commercial  
no contractual. Para  
cualquier información  
técnica, ver la noticia  
correspondiente.

Documento commerciale  
non vincolante, per tutte  
le informazioni tecniche  
fare riferimento al  
catalogo istruzioni.

Documento comercial não  
contratual. Para qualquer  
informação técnica  
complementar consultar  
as respectivas instruções.

Этот коммерческий документ  
не является юридически  
обязательным. Для получения  
технической информации, см.  
соответствующие инструкции.

# Manitowoc

**Manitowoc - Americas - World Headquarters**  
2400 S. 44th Street • Manitowoc • WI 54220 USA  
Tel: +1 920 684 4410 • Fax: +1 920 652 9778

**Manitowoc - Europe, Middle East & Africa**  
Ecully, France  
18, rue de Charbonnières B.P. 173 • 69132 ECULLY Cedex • FRANCE  
Tel: +33 (0)4 72 18 20 20 • Fax: +33 (0)4 72 18 20 00

**Manitowoc - Asia Pacific**  
16F Xu Hui Yuan Building,  
1089 Zhongshan No.2 Road (S) • Shanghai 200030 China  
Tel: +86 21 6457 0066 • Fax: +86 21 6457 4955