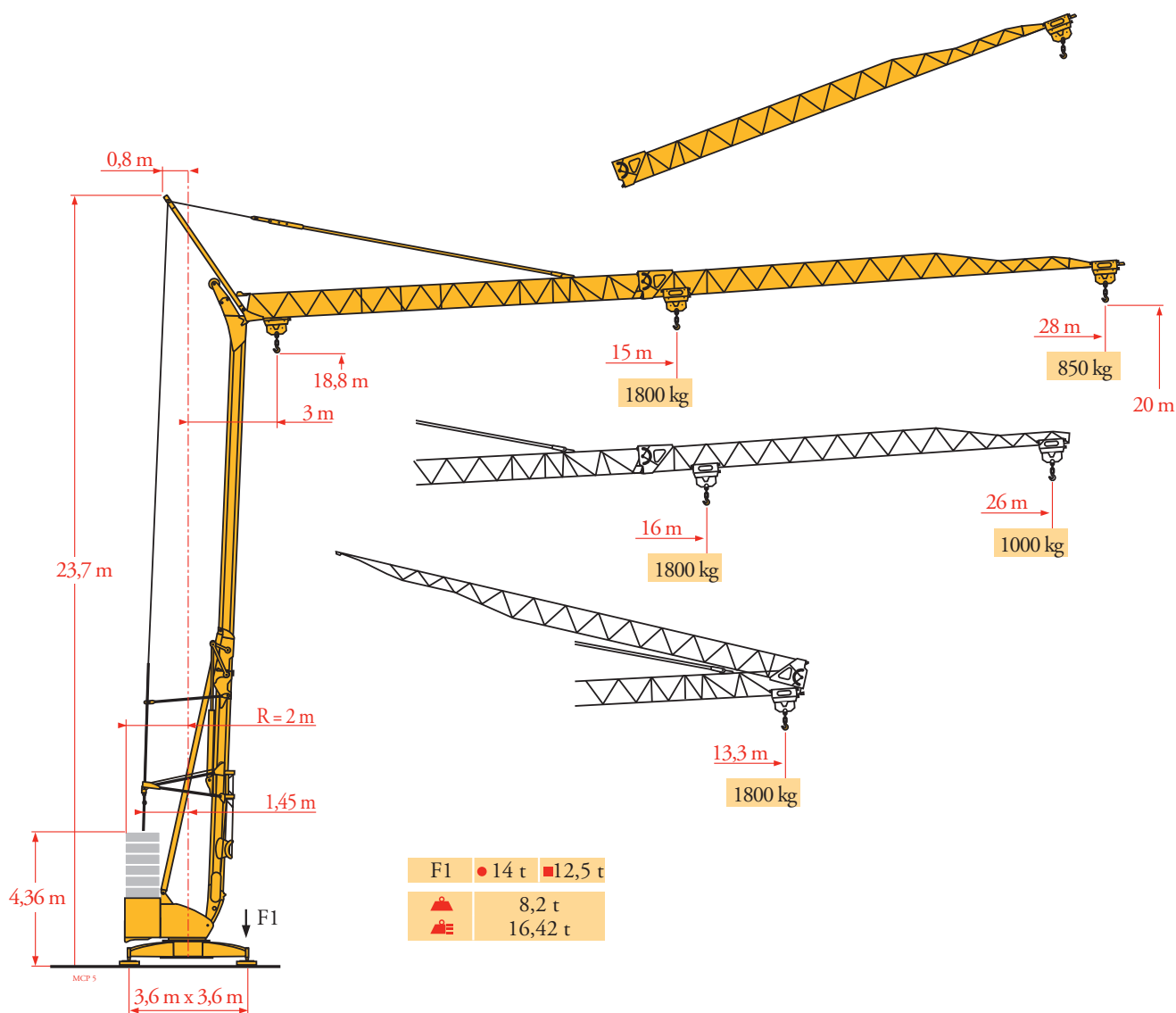
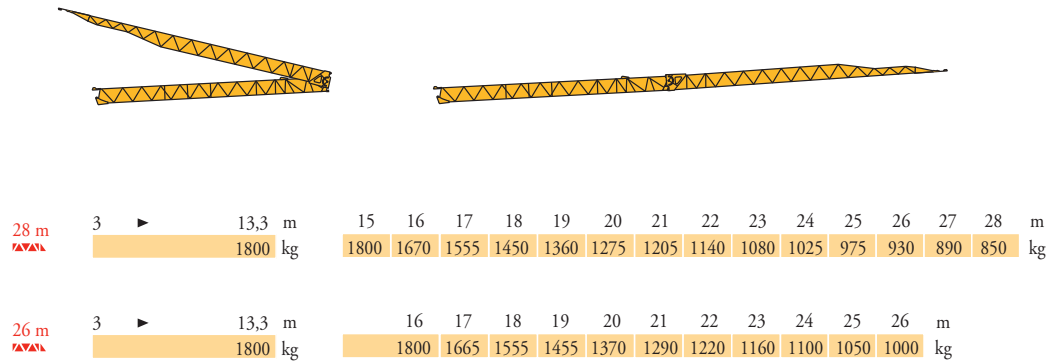


# Potain Igo 22



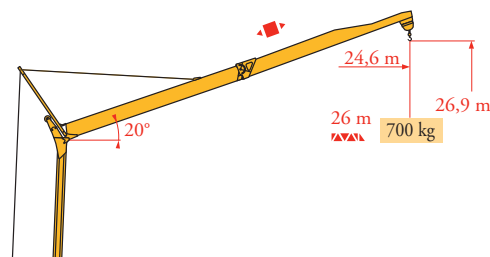
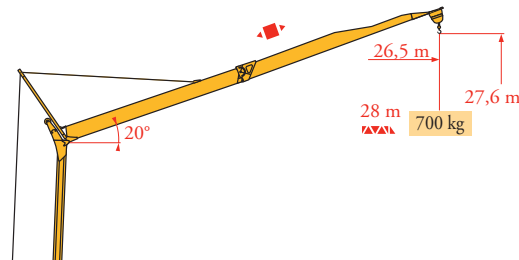
Courbes de charges  
Lastkurven  
Load diagrams  
Curvas de cargas  
Curve di carico  
Curva de cargas  
Диаграммы  
грузоподъемностей

MCP 4



Flèche relevée  
Ausleger in  
Steilstellung  
Luffing jib  
Flecha izada  
Braccio impennato  
Lança inclinada  
Маховая стрела

MCP 4



**FR**

Chariot distributeur  
Réactions en service  
Réactions hors service



A vide sans lest (ni train de transport) avec flèche et hauteur maximum.



Poids total du lest.

**DE**

Verfahrbare Laufkatze  
Reaktionskräfte in Betrieb  
Reaktionskräfte außer Betrieb

Ohne Last, Ballast (und Transportachse), mit Maximalausleger und Maximalhöhe.

Ballast-Gesamtgewicht.

**EN**

Traversing trolley  
Reactions in service  
Reactions out of service

Without load, ballast (or transport axes), with maximum jib and maximum height.

Gross ballast weight.

**ES**

Carro distribuidor  
Reacciones en servicio  
Reacciones fuera de servicio

Sin carga, sin lastre, (ni tren de transporte), flecha y altura máxima.

Peso total del lastre.

**IT**

Carrellino distributore  
Reazioni in servizio  
Reazioni fuori servizio

A vuoto, senza zavorra (ne assali di trasporto) con braccio massimo e altezza massima.

Peso totale della zavorra.

**PT**

Carro distribuidor  
Reações em serviço  
Reações fora de serviço

Sem carga (nem trem de transporte)- sem lastro com lança e altura máximas.

Peso total do lastro.

**RU**

Грузовая тележка  
Реакции при работе  
Реакции в покое

Вес без груза, балласта (или транспортных осей), с максимальной длиной стрелы и максимальной высотой.

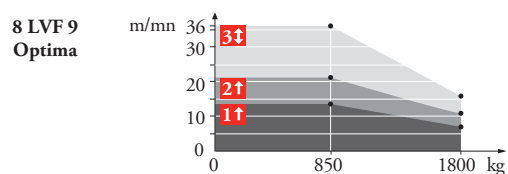
общий вес груза

Mécanismes  
Antriebe  
Mechanisms  
Mecanismos  
Meccanismi  
Mecanismos  
Механизмы

MCP 5

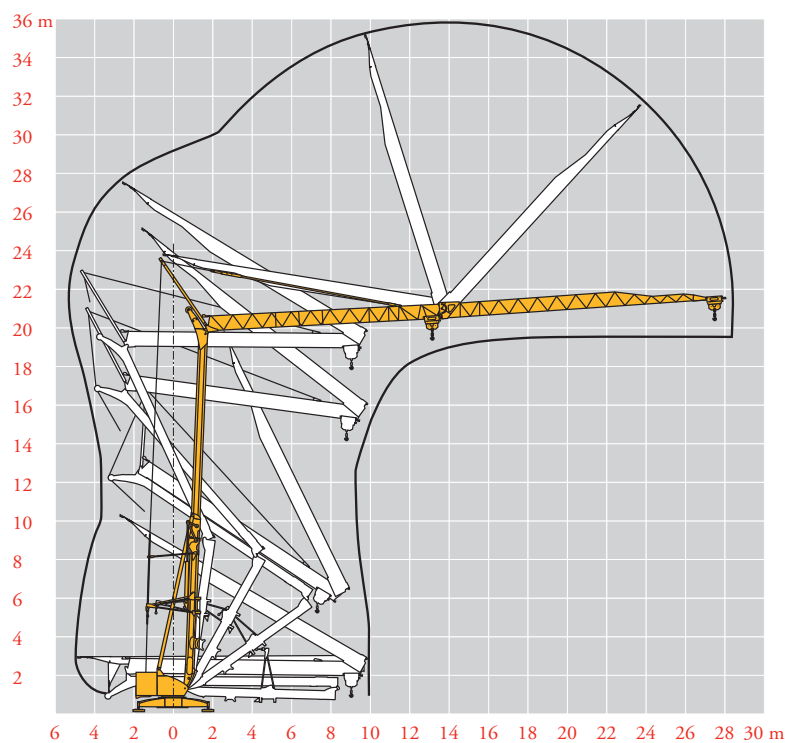
								ch - PS hp	kW
	<b>8 LVF 9 Optima</b>	230 V  20 A <b>1</b>	m/min	↑ 3,5 ↓ 3,5	↑ 7 ↓ 16	↑ 14 ↓ 36		3,3	2,4
			kg	1800	1800	850			
		230 V  32 A <b>2</b>	m/min	↑ 3,5 ↓ 3,5	↑ 11 ↓ 16	↑ 21 ↓ 36		5,2	3,8
		kg	1800	1800	850				
		400 V <b>3</b>	m/min	↓ 3,5	↓ 16	↓ 36		7,5	5,5
			kg	1800	1800	850			
	<b>1 DVF 4</b>	-	m/min	14 → 36 (0 → 850 kg) - 14 → 28 (850 → 1800 kg)				1,5	1,1
	<b>RVF 31</b>	-	tr/min U/min rpm	0 → 0,8				2	1,5

IEC 60204-32	kVA
230 V(+6% -10%) 50 Hz 400 V(+10% -10%) 50 Hz / 480 V(+ 6% -10%) 60 Hz	230 V 20 A: 4,6 kVA 230 V 32 A: 7,4 kVA 400 V/ 480 V : 11 kVA



Montage  
Montage  
Erection  
Montaje  
Montaggio  
Montagem  
Монтаж

MCP 3



**FR**

- Levage
- Distribution
- Orientation
- 50 Hz Monophasé

**DE**

- Heben
- Katzfahren
- Schwenken
- 50 Hz Einphasige

**EN**

- Hoisting
- Trolleying
- Slewing
- 50 Hz Single phase

**ES**

- Elevación
- Distribución
- Orientación
- 50 Hz Monofásica

**IT**

- Sollevarmento
- Distribuzione
- Rotazione
- 50 Hz Monofase

**PT**

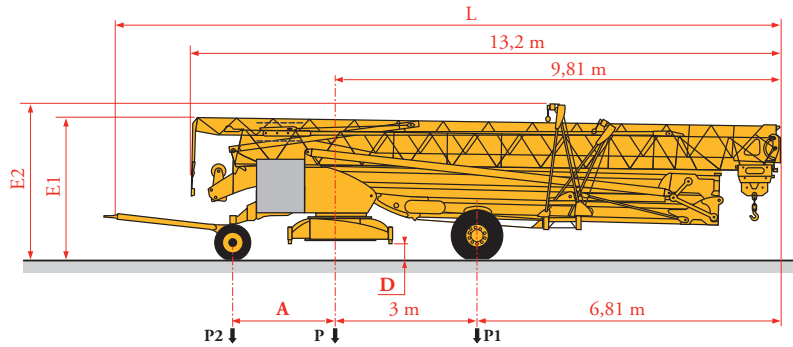
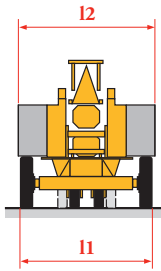
- Elevação
- Distribuição
- Rotação
- 50 Hz monofásica

**RU**

- Подъем
- Перемещение каретки
- Поворот
- Однофазное напряжение 50Hz

Transport  
 Transport  
 Transport  
 Transporte  
 Trasporto  
 Transporte  
 Транспортировка

MCP5



	Km/h	A (m)	D (m)	E1 (m)	E2 (m)	L (m)	I1 (m)	I2 (m)	P (kg)	P1 (kg)	P2 (kg)
DS62/S81	10	2,35	0,36/0,21	3,18/3,03	3,50/3,35	14,48	2,20	2,50	13650	8500	5150
DS61/S125	25	2,45	0,36/0,21	3,18/3,03	3,50/3,35	14,77	2,40	2,50	14355	9165	5190

... \*\*

FR

Voir documentations techniques.

DE

Siehe technische Dokumentation.

EN

See technical documentations.

ES

Consulte la documentación técnica.

IT

Vedere la documentazione tecnica.

PT

Consultar documentações técnicas.

RU

см. техническую документацию

\*\*



Document commercial non contractuel. Pour toute information technique se référer à la notice correspondante.

Unverbindliches Vertriebsdokument. Für technische Informationen, siehe die entsprechenden Anweisungen.

This commercial document is not legally binding. For any technical information, please refer to the corresponding instructions.

Documento commercial no contractual. Para cualquier información técnica, ver la noticia correspondiente.

Documento commerciale non vincolante. per tutte le informazioni tecniche fare riferimento al catalogo istruzioni.

Documento comercial não contractual. Para qualquer informação técnica complementar consultar as respectivas instruções.

Этот коммерческий документ не является юридически обязательным. Для получения технической информации, см. соответствующие инструкции.

# Manitowoc

**Manitowoc - Americas - World Headquarters**  
 2400 S. 44th Street • Manitowoc • WI 54220 USA  
 Tel: +1 920 684 4410 • Fax: +1 920 652 9778

**Manitowoc - Europe, Middle East & Africa**  
 Ecully, France  
 18, rue de Charbonnières B.P. 173 • 69132 ECULLY Cedex • FRANCE  
 Tel: +33 (0)4 72 18 20 20 • Fax: +33 (0)4 72 18 20 00

**Manitowoc - Asia Pacific**  
 16F Xu Hui Yuan Building,  
 1089 Zhongshan No.2 Road (S) • Shanghai 200030 China  
 Tel: +86 21 6457 0066 • Fax: +86 21 6457 4955