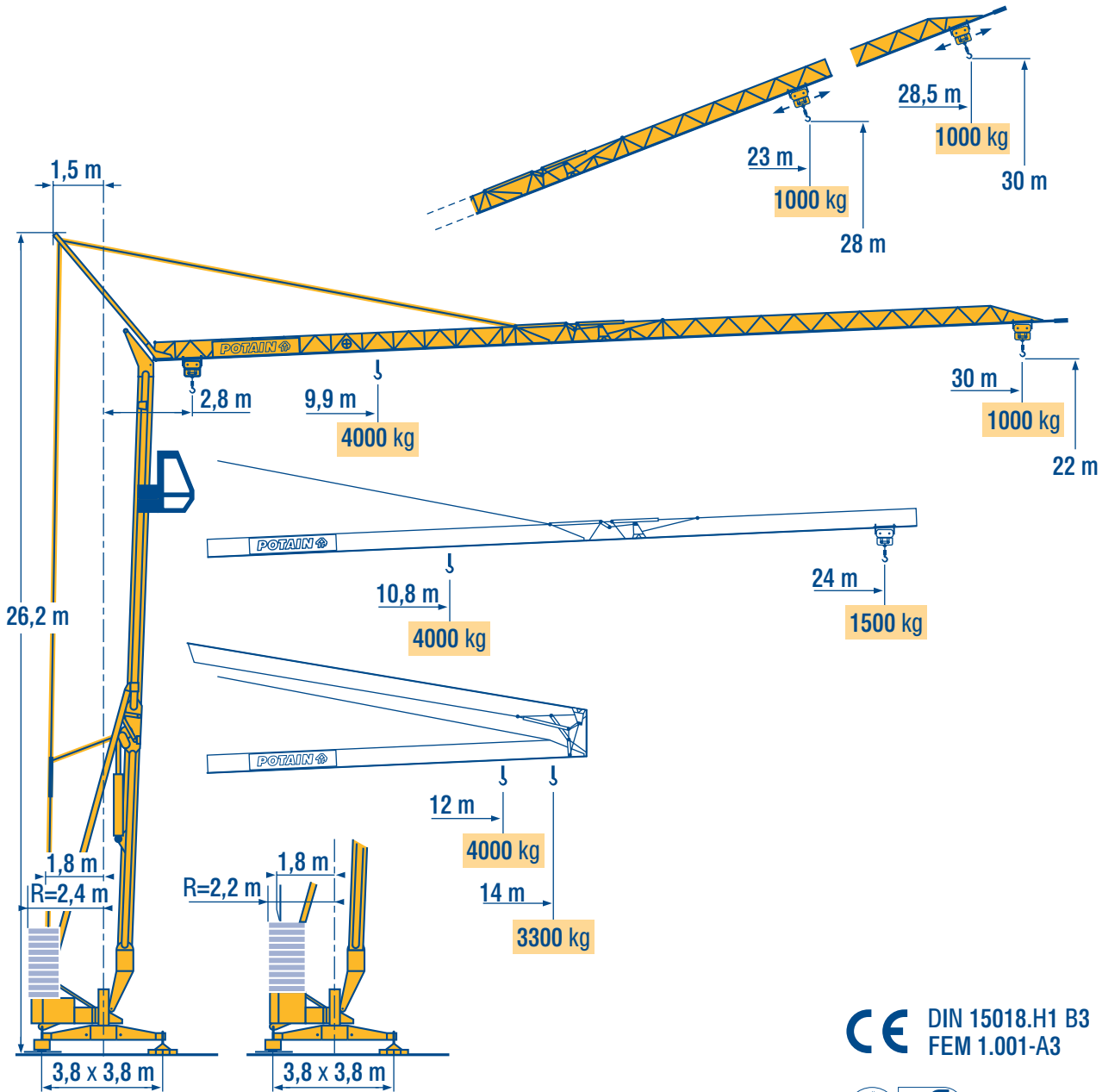


# HD 32 A



HD



HDT



GTMR



CITY CRANE



TOPKIT MD



MR



MAXI MD



MAXI TOPKIT

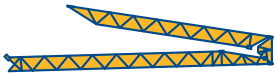


CE DIN 15018.H1 B3  
FEM 1.001-A3



LM01

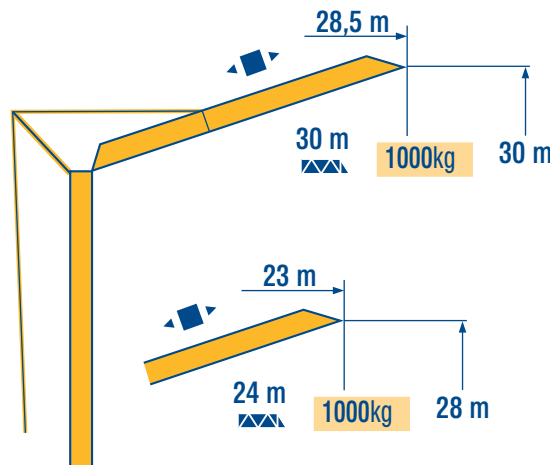
**POTAIN**  <sup>®</sup>



30 m	2,8 ▶	12	13	14	m	9,9	10	11	12	13	14	15	16	17	18	19	20	22	24	26	28	30	m
▲▲▲		4000	3615	3300	kg	4000	3960	3510	3140	2845	2595	2380	2200	2040	1900	1780	1670	1480	1330	1200	1095	1000	kg

24 m	2,8 ▶	12	13	14	m	10,8	11	12	13	14	15	16	17	18	19	20	22	24	m
▲▲▲		4000	3615	3300	kg	4000	3920	3515	3180	2905	2670	2470	2290	2135	2000	1880	1670	1500	kg

LMO 1



LMO 1



Chariot distributeur

Traversing trolley

Carrellino distributore



Verfahrbare laufkatze

Carro distribuidor

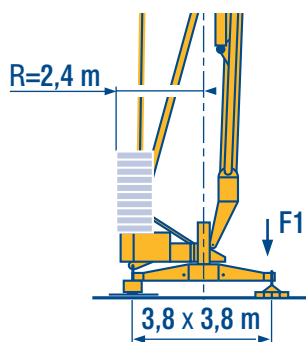
变幅小车

**Réactions**  
**Eckdrücke**

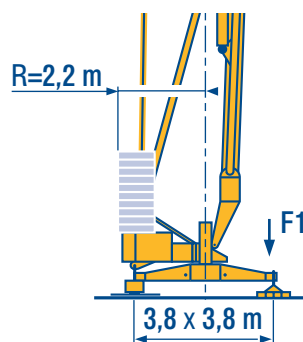
F Reactions  
D Reacciones

GB Reazioni  
E 反力

I  
C



F1 ● 19,7 t ■ 14,4 t  
▲ 11,4 t



F1 ● 20,4 t ■ 15 t  
▲ 11,4 t

LMO 1

- Réactions en service
- Réactions hors service
- ▲ A vide sans lest ni train de transport avec flèche et hauteur maximum

F Reactions in service  
D Reacciones en servicio  
E 工作状态下的反应  
C 非工作状态下的反应  
空载无压重也无运输车有吊臂和最大高度

GB Reazioni in servizio  
I Reazioni fuori servizio  
A vuoto, senza zavorra ne assali di trasporto con braccio massimo e altezza massima

- Reaktionskräfte in Betrieb
- Reaktionskräfte außer Betrieb
- ▲ Ohne Last, Ballast und Transportachse, mit Maximalausleger und Maximalhöhe.

D Reacciones en servicio  
E Reacciones fuera de servicio  
Sin carga, sin lastre, ni tren de transporte, flecha y altura máxima.

GB 工作状态下的反应  
I 非工作状态下的反应  
空载无压重也无运输车有吊臂和最大高度

**Mécanismes**  
**Antriebe**

F Mechanisms  
D Mecanismos

GB Meccanismi  
E 机构

I  
C

								ch - PS hp	kW	
▲	15 RPC 10	m/min	9	27	54	4,5	13,5	27	15	11
		kg	2000	2000	1000	4000	4000	2000		
◀ ▶	3 D2 V5/2	m/min	21 - 42						2,7	2
⦿	RCV 20	tr/min U/min rpm	0 → 1						3	2,2
◀ ● ▶	TVD 121	m/min	25						2 x 1,4	2 x 1

CEI 38	IEC 38	kVA	84/534 - 87/405
400 V (+6% -10%) 50 Hz		20 kVA	

LMO 1

- ▲ Levage
- ◀ ▶ Distribution
- ⦿ Orientation
- ◀ ● ▶ Translation
- Conforme aux directives CEE 84/534 et 87/405 sur le niveau acoustique

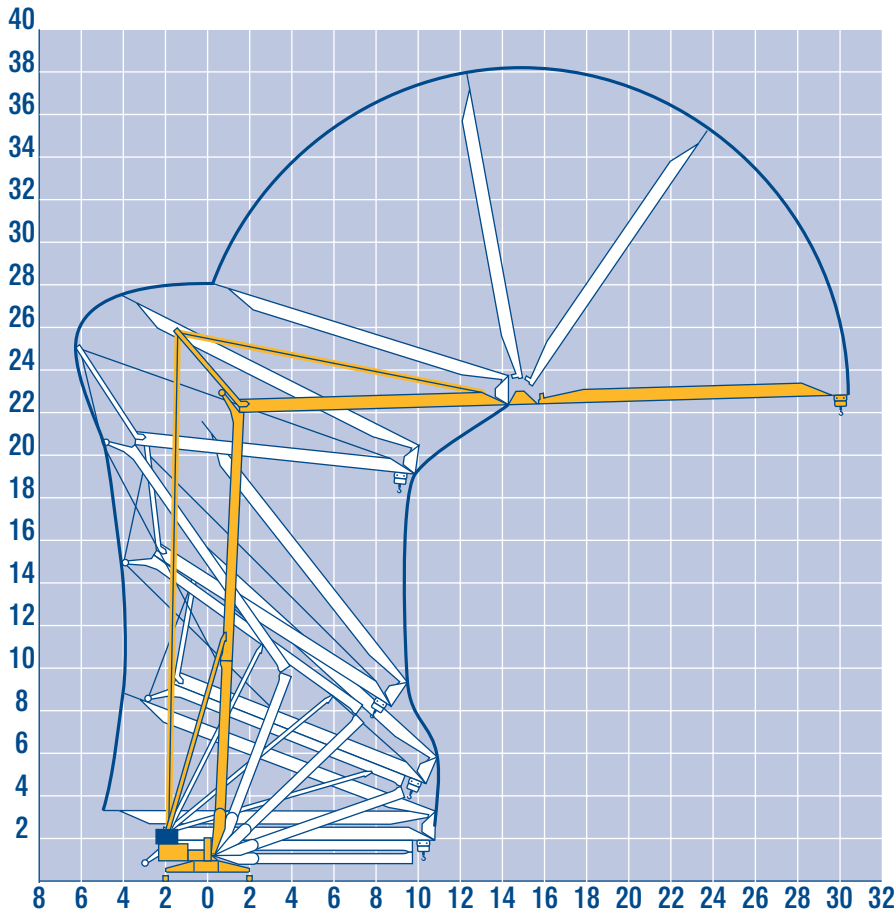
F Hoisting  
D Trolleying  
E Slewing  
C Travelling  
In compliance with the EEC 84/534 and 87/405 Instructions on noise level

GB Sollevamento  
I Diritribuzione  
Rotazione  
Traslazione  
Conforme alle direttive CEE 84/534 e 87/405 sul livello acustico

- ▲ Heben
- ◀ ▶ Katzfahren
- ⦿ Schwenken
- ◀ ● ▶ Kranfahren
- Gemäss EWG-Richtlinien 84/534 und 87/405 für den Schall-Leistungspegel

D Elevación  
E Distribución  
C Orientación  
Traslación  
Conforme con las directivas CEE 84/534 y 87/405 sobre el nivel acustico

GB 起升  
I 变幅  
回转  
行走  
符合 CEE 84/534 - CEE 87/405 声响度规定



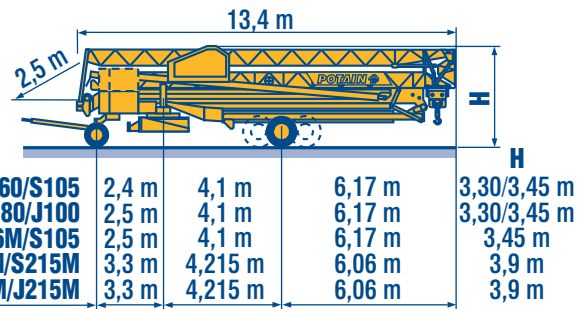
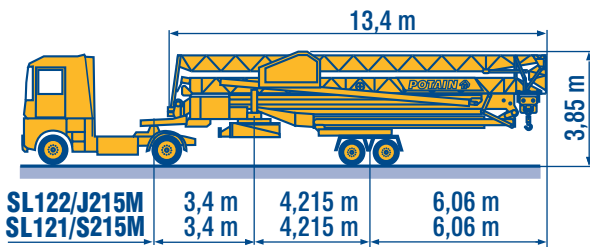
LMO 1

Transport  
Transport

F Transport  
D Transporte

GB Trasporto  
E 运输

I  
C



SL122/J215M

SL121/S215M

CJ125M/J215M

DJ126M/S215M

DJ126M/S105

DS60/S105

DS80/J100 ○

LMO 1

○ Chantier

F Site

GB Cantiere

I

○ Baustelle

D Obra

E 工地运输

C

**POTAIN**   
 GROUPE LEGRIS INDUSTRIES

18, Rue de Charbonnières, B.P. 173-F  
 69132 ECULLY Cedex  
 Tél. (33)04.72.20.20  
 Fax (33)04.72.20.00  
 http://www.potain.fr  
 E-mail : mkt@potain.fr

**HD 32 A**

Copyright.Reproduction interdite © POTAIN 1997

**Deutschland**  
 POTAIN GmbH Tel : 06.105.704.0  
**Italia**  
 POTAIN S.p.A. Tel : 039.65.631  
**China**  
 Zhangjiagang POTAIN Tel : 520. 877.1451

Réf. 1997.44 LMO 1

修改权在我方

Modifiche riservate

Modificaciones reservadas

Subject to modification

Änderungen vorbehalten

Modifications réservées

Printed in France

Réalisation SODIPE